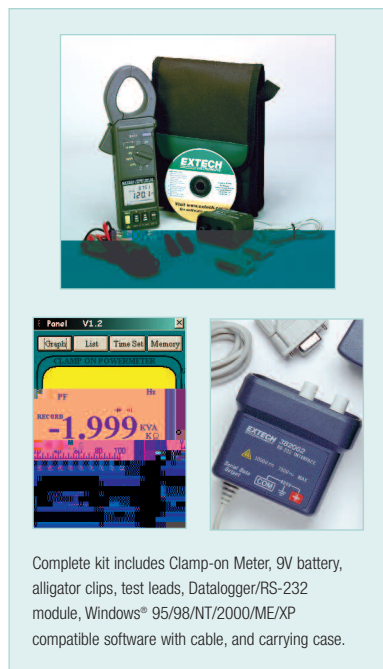
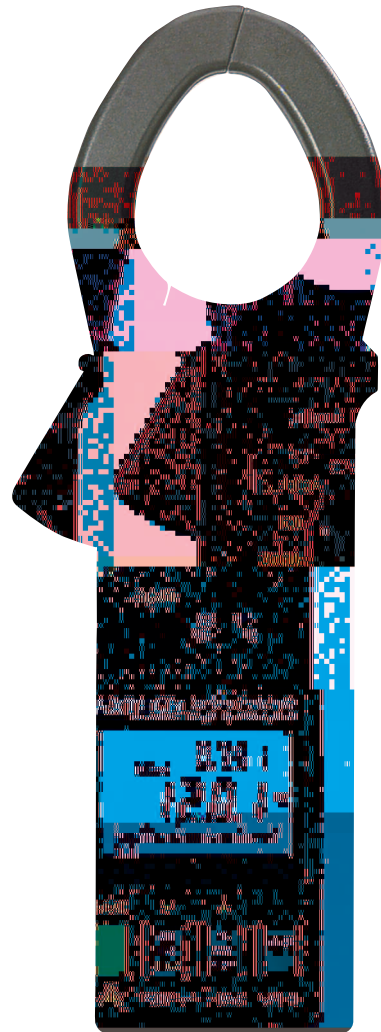


# 1000A AC/DC Clamp-on Power Datalogger Kit

 **Datalogs up to 4000 readings**  
Capture data and transfer to a PC for analysis and report generation

## Features:

- 1000A Clamp measures single f (phase) or 3f power to 600kW
- Display True Power, Apparent Power, Power Factor, True RMS Voltage and Current, Resistance and Frequency
- Dual display of kW+PF, kVA+PF, V+A, A+Hz or V+Hz
- Clamp jaws open to 1.8" (46mm)
- Built-in recorder datalogs up to 4000 readings or download to a PC
- 25 point data memory viewable on the LCD display
- Data Hold and Auto power off
- Full function display on large 4-digit LCD with fast 40 seg. bargraph, Peak Hold, and MIN/MAX
- Complete with Clamp-on Meter, 9V battery, alligator clips, test leads, Datalogger/RS-232 module, PC software with cable, and case



| Specifications:       | Range  | Resolution | Basic Accuracy |
|-----------------------|--|------------|----------------|
| True Power            | 600KW  | 10W        | ±(2%rdg+5d)    |
| Apparent Power        | 1000KVA  | 10VA       | ±(2%rdg+5d)    |
| Peak Current          | 1000A  | 0.1A       | ±(6%rdg+10d)   |
| Peak Voltage          | 600V   | 0.1V       | ±(6%rdg+10d)   |
| AC Current (40-500Hz) | 1000A  | 0.1A       | ±(1.5%rdg+5d)  |
| DC Current            | 1000A  | 0.1A       | ±(1.5%rdg+5d)  |
| AC Voltage (40-500Hz) | 600V   | 100mV      | ±(0.5%rdg+5d)  |
| DC Voltage            | 600V   | 100mV      | ±(0.5%rdg+5d)  |
| Frequency             | 500Hz  | 0.1Hz      | ±(0.5%rdg+5d)  |
| Resistance            | 10KΩ   | 1Ω         | ±(1%rdg+5d)    |
| Continuity            | Beeper when <50Ω                                   |            |                |
| Dimensions/Weight     | 10.2 x 3.7 x 1.8" (260 x 93 x 45mm)/ 15.9oz (450g) |            |                |

## Ordering Information:

382068 .....1000A AC/DC Clamp-on Power Datalogger Kit  
382068-NIST .....382068 with Calibration Traceable to NIST.

